

Create your own path with Brick Elite Parkour Equipment

USER GUIDE FOR BRICK MODULES





TABLE OF CONTENTS

Implementation of Brick Modules	1
Set-up proposales	1
Module moving system	2
Connecting Modules	3
Use of Bars (Handrails)	3

IMPLEMENTATION OF BRICK MODULES

Brick products must be installed on clean, flat floor that has a smooth surface.

SET-UP PROPOSALS

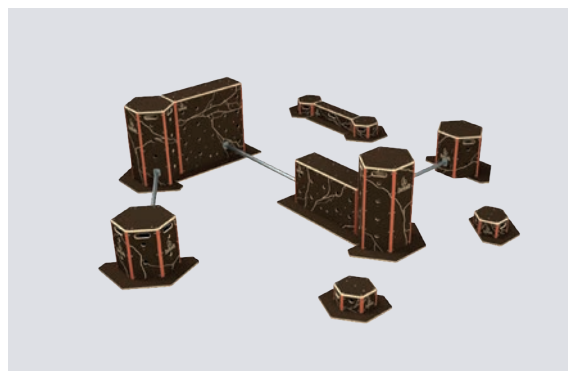
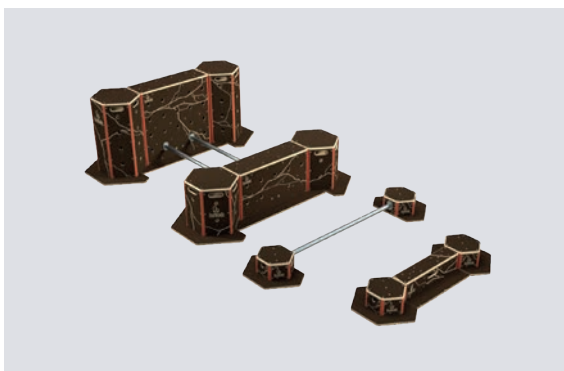
Our products are modular to leave the creativity of the set-up to practitioners while taking into account the safety criteria (please see Brick Safety Instructions).

We offer examples of layouts of the modules, but practitioners will be able, depending on the type of training desired, to **set-up the modules as they wish**.

KIT S

1 x Low Bone
1 x Precision Bar
1 x High Bone
1 x Precision Ledge
2 x Hand Rail

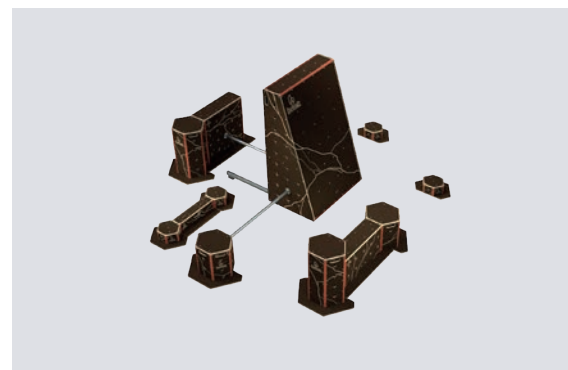
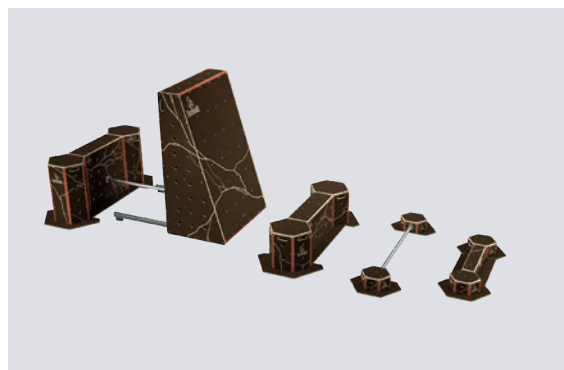
Ref.
00600100



KIT M

1 x Inclined Wall
1 x Low Bone
1 x High Bone
1 x Precision Ledge
1 x Precision Bar
2 x Hand Rail

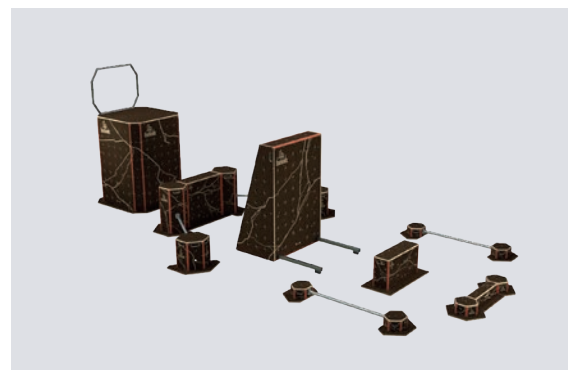
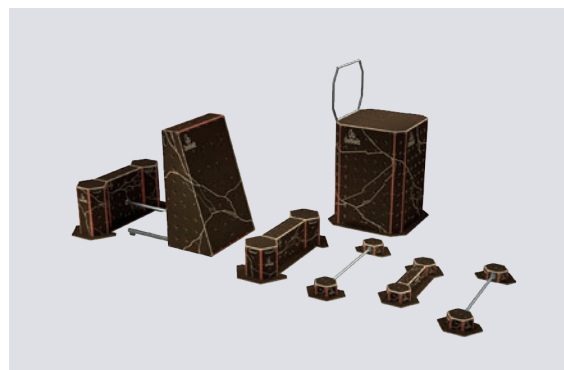
Ref.
00600101



KIT L

1 x Inclined Wall
1 x Donjon
1 x Low Bone
2 x Precision Bar
1 x High Bone
1 x Precision Ledge
2 x Hand Rail

Ref.
00600102



MODULE MOVING SYSTEM



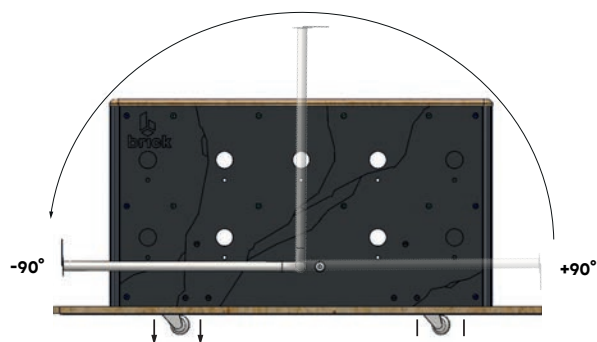
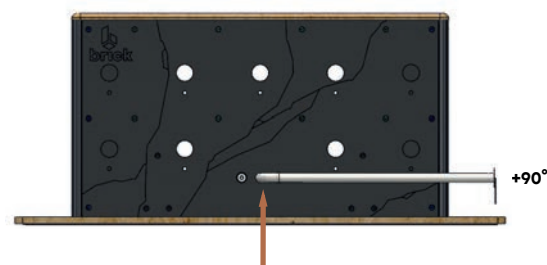
Key Handle
L

Ref.
23005226

Dimensions (mm)
620

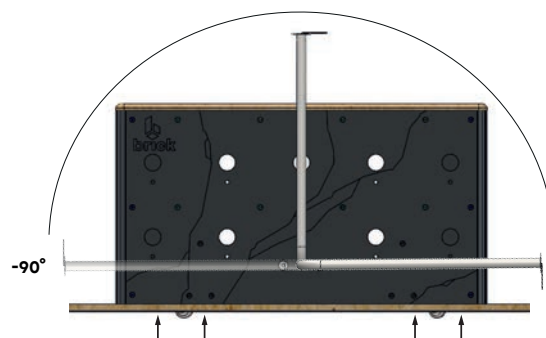
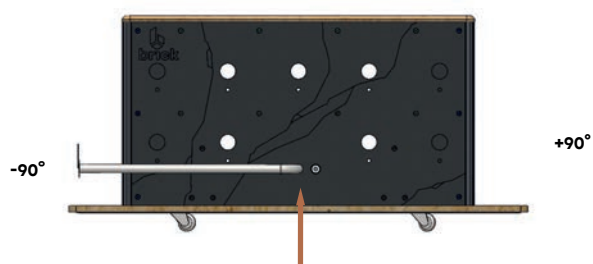
MODULE IN HIGH POSITION

- Insert the handle into the lock of the module
- The handle should be positioned horizontally to the right.
- Tilt the handle to the left to raise the module. (*see below*)
- The module is now in the high position and can be moved on its wheels.
- Remove the handle from the lock before use.



MODULE IN LOW POSITION

- Insert the handle into the lock of the module
- The handle should be positioned horizontally to the left.
- Tilt the handle to the right to lower the module to the ground. (*see below*)
- CAUTION: During the descent it is imperative to hold the handle well.
- Remove the handle from the lock before use.



CONNECTING MODULES

Assembly Key

Ref.
51000101

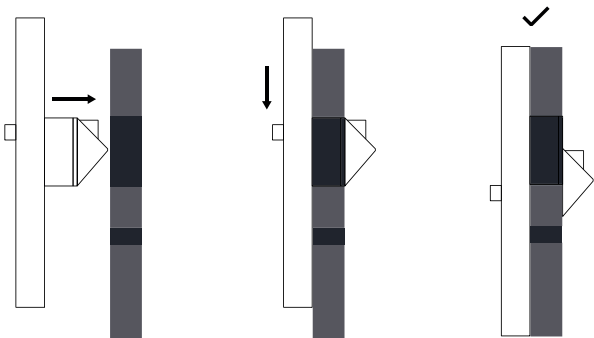


The **Assembly Key** can be used on all wood modules but also on the bars (handrails) to connect the modules together.

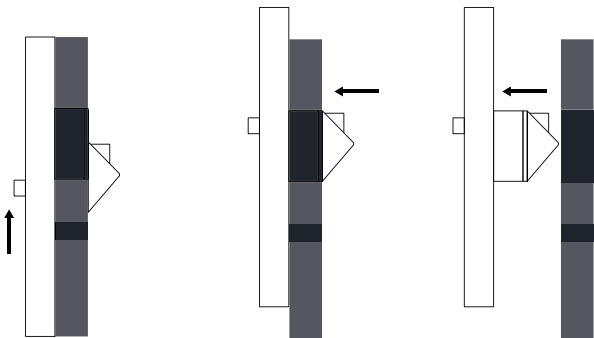
USE OF BARS (HANDRAIL)

HANDRAIL

Ref.s
1m — 00140101
1,5m — 00140102
2m — 00140103



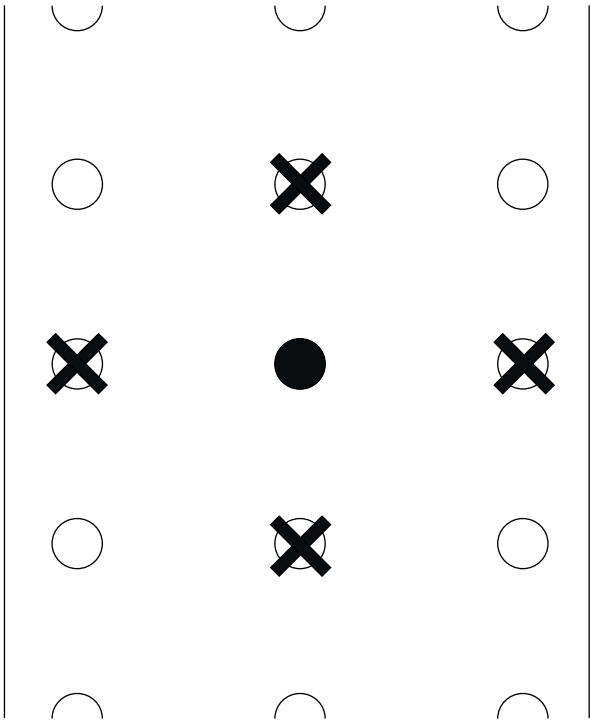
Connect a module or a bar
to another module



Disconnecting a module or a bar
from another module.

In compliance with the European standard of parkour, make sure there is always an **empty hole between each bar**, both horizontally and vertically.

See diagram below





USER GUIDE FOR BRICK MODULES



CREATRE YOUR
OWN PATH WITH BRICK
ELITE PARKOUR
EQUIPMENT

Scan this QR Code to
access our **WEBSITE** :

brickparkour.com

